



ATLAS/ICESat-2 L3A Land and Vegetation Height Quick Look, Version 6

USER GUIDE

How to Cite These Data

As a condition of using these data, you must include a citation:

Neuenschwander, A. L., K. L. Pitts, B. P. Jelley, J. Robbins, J. Markel, S. C. Popescu, R. F. Nelson, D. Harding, D. Pederson, B. Klotz, and R. Sheridan. 2023. *ATLAS/ICESat-2 L3A Land and Vegetation Height, Quick Look Version 6*. [Indicate subset used]. Boulder, Colorado USA. NASA National Snow and Ice Data Center Distributed Active Archive Center. <https://doi.org/10.5067/ATLAS/ATL08QL.006>. [Date Accessed].

FOR QUESTIONS ABOUT THESE DATA, CONTACT NSIDC@NSIDC.ORG

FOR CURRENT INFORMATION, VISIT <https://nsidc.org/data/ATL08QL>



National Snow and Ice Data Center

TABLE OF CONTENTS

1	DATA DESCRIPTION	2
1.1	Parameters	2
1.2	File Information.....	2
1.2.1	Format.....	2
1.2.2	ATLAS/ICESat-2 Description.....	2
1.2.3	File Contents.....	6
1.2.4	Data Groups.....	7
1.2.5	Naming Convention	9
1.2.6	Browse Files	10
1.3	Spatial Information.....	10
1.3.1	Coverage	10
1.3.2	Resolution.....	11
1.3.3	Geolocation.....	11
1.4	Temporal Information	12
1.4.1	Coverage	12
1.4.2	Resolution.....	12
2	DATA ACQUISITION AND PROCESSING.....	12
2.1	Background	12
2.2	Acquisition	14
2.3	Processing.....	14
2.3.1	Noise Filtering.....	14
2.3.2	Surface Finding.....	15
2.3.3	Top of Canopy Finding Filter.....	17
2.3.4	Photon Classification	17
2.3.5	Refining the Photon Classifications	17
2.3.6	Canopy Height Determination.....	18
2.4	Quality, Errors, and Limitations	18
2.4.1	Quick Look Data Quality	18
3	VERSION HISTORY	19
4	DOCUMENT INFORMATION.....	20
4.1	Publication Date	20
4.2	Date Last Updated.....	20

1 DATA DESCRIPTION

NOTE: ATL08QL is the quick look version of ATL08. The ATL08QL products are based on the same algorithms that generate the ATL08 final data products. Once final ATL08 files are available, the corresponding ATL08QL files will be removed. For details on quick look data quality, see Section 2.4.1.

1.1 Parameters

Along-track terrain and canopy height above the WGS 84 ellipsoid (ITRF2014 reference frame).

1.2 File Information

1.2.1 Format

Data are provided as HDF5 formatted files. [PhoREAL](#) is a free library of geospatial analysis tools and source code written specifically for working with ATL03 and ATL08 data.

1.2.2 ATLAS/ICESat-2 Description

The following brief description of the Ice, Cloud and land Elevation Satellite-2 (ICESat-2) observatory and Advanced Topographic Laser Altimeter System (ATLAS) instrument is provided to help users better understand the file naming conventions, internal structure of data files, and other details referenced by this user guide. The ATL08 data product is described in detail in the Ice, Cloud, and land Elevation Satellite-2 Project Algorithm Theoretical Basis Document for the Land - Vegetation Along-Track Product (ATBD for ATL08 | V6, <https://doi.org/10.5067/8ANPSL1NN7YS>).

The ATLAS instrument and ICESat-2 observatory utilize a photon-counting lidar and ancillary systems (GPS, star cameras, and ground processing) to measure the time a photon takes to travel from ATLAS to Earth and back again and determine the reflected photon's geodetic latitude and longitude. Laser pulses from ATLAS illuminate three left/right pairs of spots on the surface that trace out six approximately 14 m wide ground tracks as ICESat-2 orbits Earth. Each ground track is numbered according to the laser spot number that generates it, with ground track 1L (GT1L) on the far left and ground track 3R (GT3R) on the far right. Left/right spots within each pair are approximately 90 m apart in the across-track direction and 2.5 km in the along-track direction. The ATL08 data product is organized by ground track, with ground tracks 1L and 1R forming pair one, ground tracks 2L and 2R forming pair two, and ground tracks 3L and 3R forming pair three. Each pair also has a Pair Track—an imaginary line halfway between the actual location of the left and right beams (see Figure 1). Pair tracks are approximately 3 km apart in the across-track direction.

The beams within each pair have different transmit energies—so-called weak and strong beams—with an energy ratio between them of approximately 1:4. The mapping between the strong and

weak beams of ATLAS, and their relative position on the ground, depends on the orientation (yaw) of the ICESat-2 observatory, which is changed approximately twice per year to maximize solar illumination of the solar panels. The forward orientation corresponds to ATLAS traveling along the +x coordinate in the ATLAS instrument reference frame (see Figure , left). In this orientation, the weak beams lead the strong beams and a weak beam is on the left edge of the beam pattern. In the backward orientation, ATLAS travels along the -x coordinate, in the instrument reference frame, with the strong beams leading the weak beams and a strong beam on the left edge of the beam pattern (see Figure 1, right). The first yaw flip was performed on 28 December 2018, placing the spacecraft into the backward orientation. ATL08 reports the spacecraft orientation in the `sc_orient` parameter stored in the `/orbit_info/` data group (see Section 1.2.4 Data Groups). The current spacecraft orientation, as well as a history of previous yaw flips, is available in the [ICESat-2 Major Activities](#) tracking document (.xlsx).

The Reference Ground Track (RGT) refers to the imaginary track on Earth at which a specified unit vector within the observatory is pointed. During nominal operating conditions onboard software aims the laser beams so that the RGT is between ground tracks 2L and 2R (i.e., coincident with Pair Track 2). The ICESat-2 mission acquires data along 1,387 different RGTs. Each RGT is targeted in the polar regions once every 91 days to allow elevation changes to be detected. Cycle numbers track the number of 91-day periods that have elapsed since the ICESat-2 observatory entered the science orbit. RGTs are uniquely identified, for example in ATL02 file names, by appending the two-digit cycle number (cc) to the RGT number, e.g., 0001cc to 1387cc.

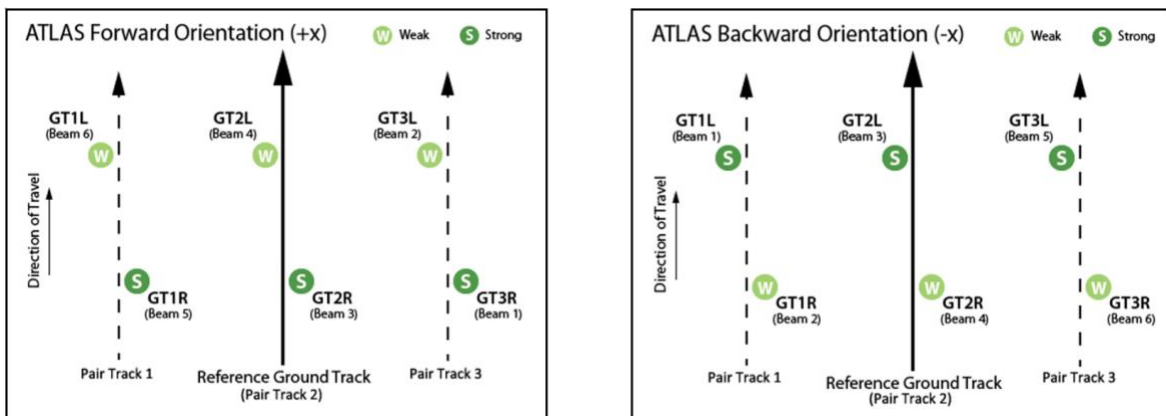


Figure 1. Spot and ground track (GT) naming convention with ATLAS oriented in the forward (instrument coordinate +x) direction and backward (instrument coordinate -x) direction.

Under normal operating conditions, no data are collected along the RGT; however, during spacecraft slews, or off-pointing, some ground tracks may intersect the RGT. Off-pointing refers to a series of plans over the mid-latitudes that have been designed to facilitate a global ground and canopy height data product with approximately 2 km track spacing. Off-pointing began on 1 August

2019 with RGT 518, after the ATLAS/ICESat-2 PPD and POD solutions had been adequately resolved and the instrument had pointed directly at the reference ground track for at least a full 91 days (1,387 orbits).

Users should note that sometimes, for various reasons, the spacecraft pointing may lead to ICESat-2 data collected offset at some distance from the RGTs instead of along the nominal RGT. Although not along the nominal RGT, the geolocation information and data quality for these data are not degraded. As an example, from 14 October 2018 and 30 March 2019, the spacecraft pointing control was not yet optimized. To identify such time periods, refer to the ICESat-2 Major Activities file.

NOTE: ICESat-2 reference ground tracks with dates and times can be downloaded as KMZ files from NASA's [ICESat-2 | Technical Specs](#) page, below the Orbit and Coverage table.

Various reference systems and dynamic processes, or geophysical corrections, occur during an ATLAS/ICESat-2 measurement (Figure 2). Table 1 lists the corrections needed for each surface type and ICESat-2 product. For example, to determine an estimate of the mean sea surface, several well-modeled, time-varying effects must be accounted for.

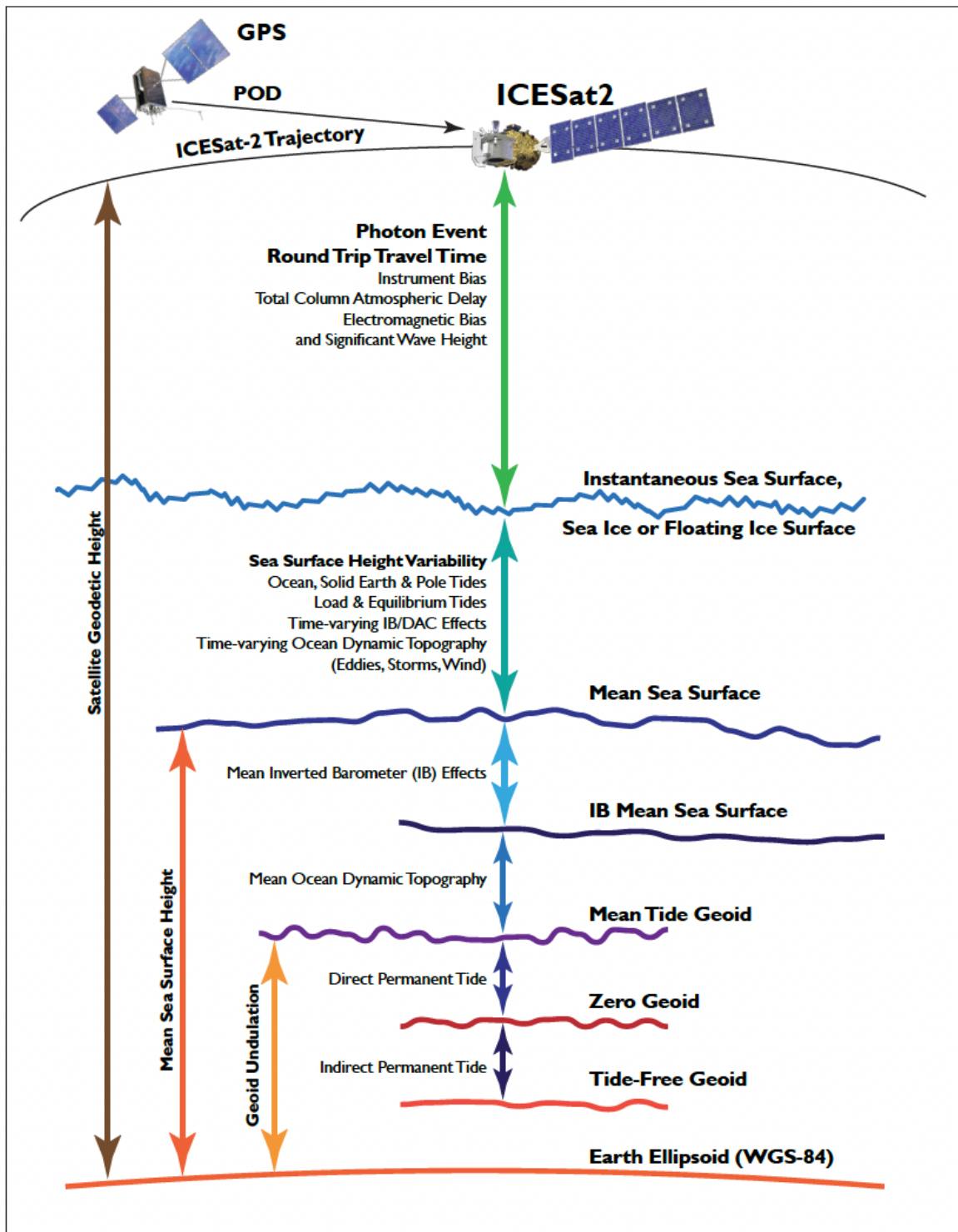


Figure 2. Geophysical corrections used in satellite altimetry. Taken from *ICESat-2 Data Comparison User's Guide for Rel006* available on the ATL03 data set landing page.

Table 1. Geophysical Corrections Applied to ICESat-2 Products

ICESat-2 Products by Surface Type	Geophysical Corrections ¹
Photon-level product (ATL03) (i.e., corrections applicable across all surface types)	Ocean loading Solid Earth tide Solid Earth pole tide Ocean pole tide Total column atmospheric range-delay
Land Ice, Land, and Inland Water (ATL06, ATL08, and ATL13)	<i>No corrections beyond ATL03</i>
Sea Ice (ATL07 and ATL10)	Referenced to mean sea surface Ocean tide Long period equilibrium ocean tide Inverted barometer (IB)
Ocean (ATL12)	Ocean tide Long period equilibrium ocean tide

¹For details, see Section 5 of the *ICESat-2 Data Comparison User's Guide for Rel006* available on the ATL03 data set landing page.

1.2.3 File Contents

ATL08 data are provided as granules (files) that span about 1/14th of an orbit. Granule boundaries are delineated by lines of latitude that define 14 regions, numbered 01–14 as shown in Figure 3.

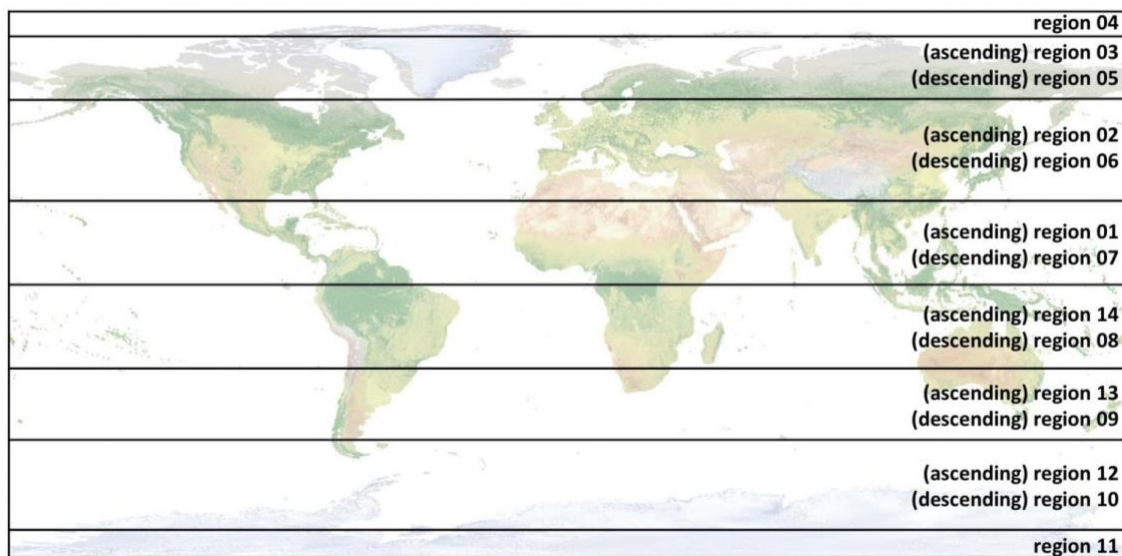


Figure 1. ATL08 region/granule boundaries.

The following table lists the latitude bounds and region numbers for all 14 granule regions.

Table 2. ATLAS/ICESat-2 Granule Boundaries and Region Numbers

Region #	Latitude Bounds	Region #	Latitude Bounds
01	Equator → 27° N (ascending)	08	Equator → 27° S (descending)
02	27° N → 59.5° N (ascending)	09	27° S → 50° S (descending)
03	59.5° N → 80° N (ascending)	10	50° S → 79° S (descending)
04	80° N (ascending) → 80° N (descending)	11	79° S (descending) → 79° S (ascending)
05	80° N → 59.5° N (descending)	12	79° S → 50° S (ascending)
06	59.5° N → 27° N (descending)	13	50° S → 27° S (ascending)
07	27° N (descending) → Equator	14	27° S → Equator (ascending)

Note that the Land and Vegetation Height product does not produce data granules for orbital segments that span open ocean only (i.e., do not cross a land surface).

1.2.4 Data Groups

Within data files, similar variables such as science data, instrument parameters, altimetry data, and metadata are grouped together according to the HDF model. ATL08 data files contain the top-level groups shown in Figure 4.

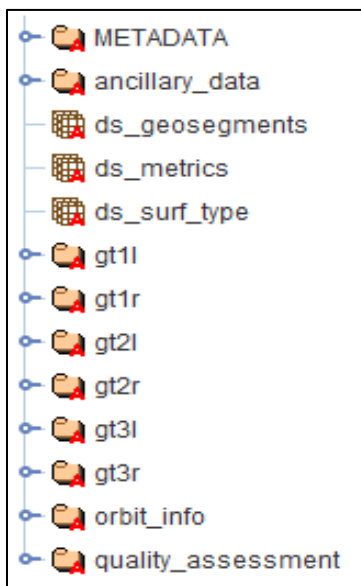


Figure 2. ATL08 data groups shown in HDFView.

The following sections summarize the structure and primary variables of interest in ATL08 data files. Additional details are available in "Section 2 | ATL08 Data Product" of the ATBD for ATL08. A complete list of parameters is available in the ATL08 Data Dictionary.

1.2.4.1 METADATA

ISO19115 structured metadata with sufficient content to generate the required geospatial metadata.

1.2.4.2 ancillary_data

Information that is ancillary to the data product. This may include product characteristics, instrument characteristics, and/or processing constants. This group also contains the `/land/` subgroup, which houses constants specific to the land/vegetation product.

1.2.4.3 gt1l–gt3r

Six `gt[x]` groups, each of which contains the parameters for one of the six ATLAS ground tracks. Each `gt[x]` top-level group contains the following subgroups:

- `/land_segments/` contains parameters related to 100 m land segments. Key parameters include time, latitude, and longitude of the centermost signal photon; the number of signal photons in the segment (`n_seg_ph`); a night flag; land, snow, and water masks; and descriptive statistics. This group also contains the following subgroups:
 - `/canopy/` that contains parameters generated by the canopy finding algorithm, including canopy heights and statistics for the segment;
 - `/terrain/` that contains terrain parameters aggregated at 100 m.
- `/signal_photons/` contains parameters related to individual photons, including the classification flag for each photon (noise, ground, canopy, or canopy top) and indexes to trace photons back to ATL03 source product.

1.2.4.4 orbit_info

Parameters that are constant for a granule, such as the RGT number and cycle, the spacecraft orientation, and elapsed time.

1.2.4.5 quality assessment

Quality assessment data for the granule as a whole, including a pass/fail flag and a failure reason indicator.

1.2.4.6 Dimension scales

Three HDF5 dimension scales are stored at the top level alongside the data groups—`ds_geosegments`, `ds_metrics`, and `ds_surf_type`—which index the within-land geosegments, surface type, and metrics arrays.

For details about how the parameters are organized in the ATL08 product, see "Section 2 | ATL08: Data Product" in the ATBD for ATL08.

1.2.5 Naming Convention

Data files utilize the following naming convention:

`ATL08QL_[yyyymmdd][hhmmss]_[ttttccss]_[vvv_rr].h5`

Example:

`ATL08QL_20210713015445_02971202_006_01.h5`

The following table describes the file naming convention variables:

Table 3. File Naming Convention Variables and Descriptions

Variable	Description
ATL08QL	ATLAS/ICESat-2 L3A Land and Vegetation Height Quick Look product
yyyymmdd	Year, month, and day of data acquisition
hhmmss	Data acquisition start time, hour, minute, and second (UTC)
tttt	Four-digit Reference Ground Track number. The ICESat-2 mission has 1,387 RGTs, numbered from 0001 to 1387.
cc	Cycle number. Each of the 1,387 RGTs is targeted in the polar regions once every 91 days; the cycle number tracks the number of 91-day periods that have elapsed since ICESat-2 entered the science orbit.
ss	Orbital segment (region) number (see Figure 3). ATL08QL data files cover approximately 1/14 th of an orbit, and orbital segment numbers range 01–14.
vvv_rr	Version and revision number*

From time to time, NSIDC receives duplicate, reprocessed granules from our data provider. These granules have the same file name as the original (i.e., date, time, ground track, cycle, and segment number), but the revision number has been incremented. Although NSIDC deletes the superseded granule, the process can take several days. If you encounter multiple granules with the same file name, please use the granule with the highest revision number.

Each data file has a corresponding XML file that contains additional science metadata. XML metadata files have the same name as their corresponding .h5 file but with .xml appended.

1.2.6 Browse Files

Browse files are provided as JPGs that contain images designed to quickly assess the location and quality of each granule's data. Images include track location, canopy heights, and terrain and canopy photon count for each ground track. Browse files utilize the same naming convention as their corresponding data file but with "_BRW" and descriptive keywords appended.

1.3 Spatial Information

1.3.1 Coverage

Spatial coverage is global. However, data files are not produced for orbital segments that cross open ocean only (i.e., do not cross a land surface).

ATL08 data can be referenced by numbered geographical regions unique to the ATL08 product, which roughly correspond to continents (Greenland is assigned to its own region and Antarctica is divided into four), for a total of 11 regions (see Figure 5). The ATL08 regions encompassed by the ATL03 input granule are stored in `\ancillary_data\land\atl08_region`.

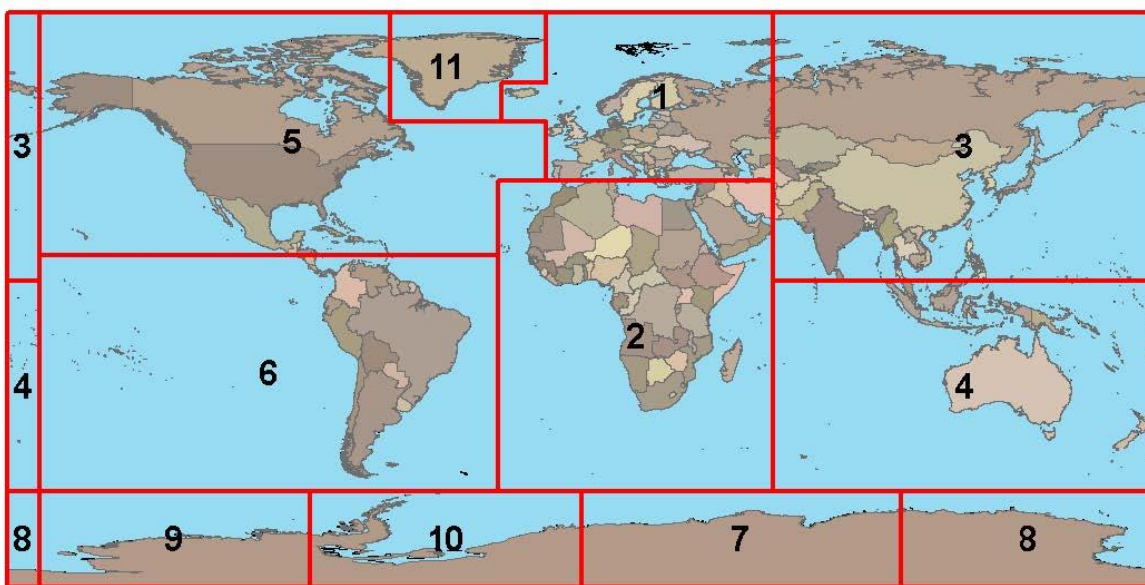


Figure 3. ATL08 Geographic Regions

1.3.1.1 Land Mask

[Static surface masks](#) (land ice, sea ice, land, and ocean) are applied to ATL03 to reduce the volume of data that a surface-specific along-track data product is required to process. The [land surface mask](#) directs the ATL08 algorithm to consider data from only those areas of interest.

1.3.2 Resolution

The ATLAS instrument transmits laser pulses at 10 kHz. At the nominal ICESat-2 orbit altitude of 500 km, this yields approximately one transmitted laser pulse every 0.7 meters along ground tracks. Note, however, that the number of photons that return to the telescope depends on surface reflectivity and cloud cover (which obscures ATLAS's view of Earth). As such, the spatial resolution of signal photons varies.

For ATL08, the canopy and ground surfaces are processed in fixed 100 m data segments, which typically contain more than 100 signal photons but may in some cases contain less. Segments that contain less than 100 meters worth of data are flagged using the `subset_te_flag` and `subset_can_flag` parameters (see Sections "2.1.16 | Subset_te_flag" and "2.2.23 | Subset_can_flag" in the ATBD for ATL08). The science team has determined that fewer than 50 signal photons in a 100 m segment does not accurately represent the surface. As such, segments with fewer than 50 photons ($gt[x]/land_segments/n_seg_ph$) report all height fields as invalid (except for interpolated height surfaces).

1.3.3 Geolocation

The following table contains details about WGS 84:

Table 4. Geolocation Details

Geographic coordinate system	WGS 84
Projected coordinate system	N/A
Longitude of true origin	Prime Meridian, Greenwich
Latitude of true origin	N/A
Scale factor at longitude of true origin	N/A
Datum	WGS 84
Ellipsoid/spheroid	WGS 84
Units	degree
False easting	N/A
False northing	N/A
EPSG code	4326
PROJ4 string	+proj=longlat +datum=WGS84 +no_defs
Reference	https://epsg.io/4326

For information about ITRF2014, see the International Terrestrial Reference Frame | [ITRF2014 webpage](#).

1.4 Temporal Information

1.4.1 Coverage

Quick look data are published ~72 hours after satellite observation and removed once the final files arrive or after three months if the final file does not get released due to quality issues.

Note that satellite maneuvers, data downlink issues, and other events can introduce data gaps into the ICESat-2 suite of products. ATL03 acts as the bridge between the lower-level, instrumentation-specific data and the higher-level products. On the data set landing page, users can download and consult a regularly updated [list of ATL03 data gaps](#) (.xlsx).

NOTE: ATL08QL granules will be removed once the final ATL08 granule is available. The temporal coverage will therefore be a sliding window.

1.4.2 Resolution

Data are re-acquired along each of ATLAS/ICESat-2's 1,387 RGTs every 91 days (i.e., the satellite has a 91-day repeat cycle).

2 DATA ACQUISITION AND PROCESSING

2.1 Background

The ATL08 product contains heights for both terrain and canopy in the along-track direction, plus other descriptive parameters. These data are derived from geolocated, time-tagged photon heights passed to ATL08, along with other parameters, from the ATLAS/ICESat-2 L2A Global Geolocated Photon Data (ATL03) product. The following figure illustrates the suite of ICESat-2 data products:

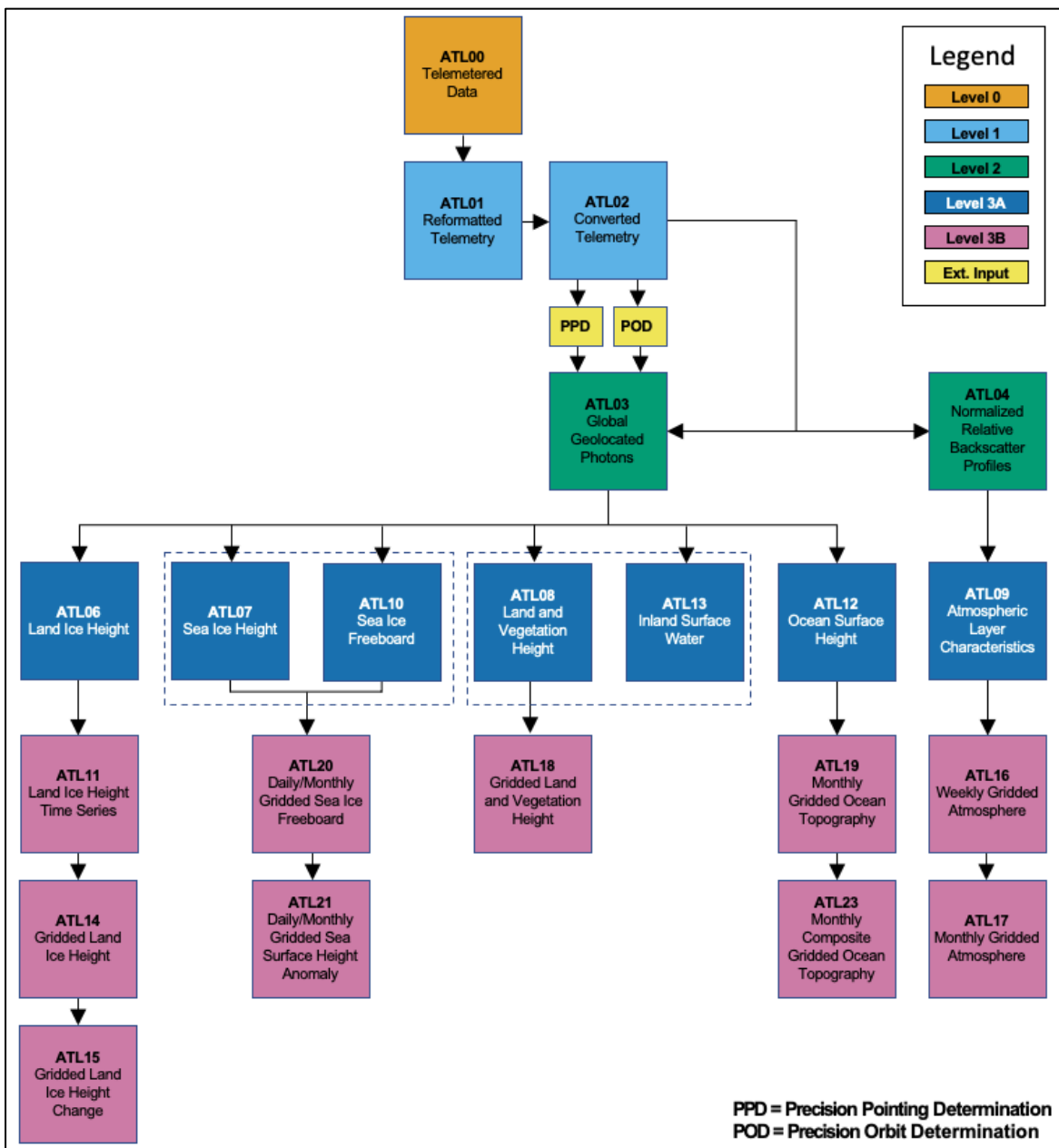


Figure 4. ICESat-2 data processing flow. The ATL01 algorithm reformats and unpacks the Level 0 data and converts it into engineering units. ATL02 processing converts the ATL01 data to science units and applies instrument corrections. The Precision Pointing Determination (PPD) and Precision Orbit Determination (POD) solutions compute the pointing vector and position of the ICESat-2 observatory as a function of time. ATL03 acts as the bridge between the lower level, instrumentation-specific products and the higher-level, surface-specific products.

2.2 Acquisition

Input sources used to generate the ATL08 product consist primarily of medium- and high-confidence signal photon events from ATL03 plus the Landsat Tree Cover Continuous Fields data set (2000 epoch).

2.3 Processing

To detect both the canopy surface and the underlying topography, the ATL08 software has been designed to accept multiple approaches to capture both the upper and lower surface signal photons. The algorithm utilizes iterative photon filtering in the along-track direction, which best preserves signal photons returned from the canopy and topography while rejecting noise photons. The following sections outline the approach implemented by the algorithm. More detailed descriptions are available in "Section 3 | Algorithm Methodology" and "Section 4 | Algorithm Implementation" of the ATBD for ATL08.

2.3.1 Noise Filtering

Removing solar background photons represents one of the biggest challenges with photon counting lidar data. The ATL03 signal finding approach uses a histogramming strategy that places photons into vertical bins along a consistent horizontal span and then assumes the signal lies within the bins that contain the highest number of photons. This method works well over simple surfaces such as ice sheets; however, photons that are reflected from the top of the canopy in vegetated areas are not always flagged as signal. As such, before surface finding commences in ATL08, the input from ATL03 is passed through an additional signal finding method called Differential, Regressive, and Gaussian Adaptive Nearest Neighbor (DRAGANN), which was developed specifically to identify and remove noise photons from histogrammed photon point clouds.

DRAGANN assumes that signal photons will be closer together in space than random noise photons. The method implements an adaptive, nearest neighbor search, which can apply different thresholds for variable levels of background noise and changing surface reflectance along the data profile. The search finds an effective radius by computing the probability of finding a specified number of points (P) within a search area. However, to account for certain cases, e.g., nighttime acquisitions when the solar background noise will be considerably lower, the value of P adapts dynamically based on estimations of the signal and noise rates from the photon cloud.

Once the radius has been computed, DRAGANN counts the number of points within the radius for each point and histograms that set of values. The distribution of the number of points in each bin contains two distinct peaks—a noise peak and a signal peak. DRAGANN then utilizes an iterative

process of Gaussian curve fitting and statistical evaluation to determine a threshold that can be used to separate noise from signal. Once the signal photons have been identified by DRAGANN, they are combined with the coarse signal finding output from ATL03. This process is described in detail in "Section 3.1.1 | DRAGANN" in the ATDB for ATL08.

2.3.2 Surface Finding

The surface finding approach utilizes one algorithm to find the ground surface and canopy surface (as noted previously, the science team anticipates that future releases will combine multiple approaches to better distinguish individual photons as ground, canopy, top of canopy, or noise).

Figure 7 shows a flowchart of the signal finding approach in ATL08. The sections that follow briefly describe the steps in the surface finding algorithm. The process is detailed in "Section 3.2 | Surface Finding" of the ATBD for ATL08.

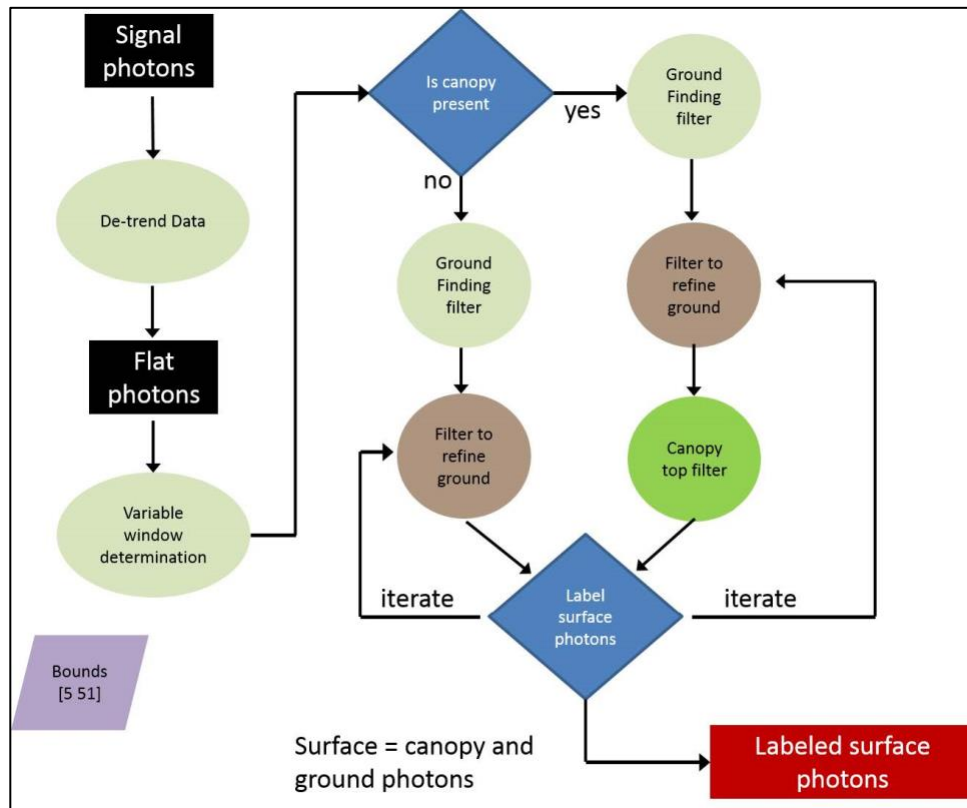


Figure 5. Flowchart of ATL08 Surface Finding.

2.3.2.1 Signal Photon De-trending

The effect of topography on the input data is removed to improve the performance of the algorithm. To achieve this, the input signal photons are de-trended by subtracting a heavily smoothed representation of the surface. Essentially, this surface is a low pass filter of the original data; most

of the analyses to detect the canopy and ground are applied to a high pass filter of the data. The amount of smoothing, i.e., the window size, depends on the underlying relief. For example, for segments with high relief, the smoothing window is decreased to ensure topography is not filtered out (Section 3.2.1, ATBD for ATL08).

2.3.2.2 Canopy Determination

The success of the surface finding algorithm relies heavily on correctly identifying the presence of canopy along any given L-km length segment. Due to the large volume of data ATLAS generates, this process is automated so that the correct methodology can be applied for surface extraction. In the absence of canopy, the iterative filtering approach is useful; otherwise, canopy must be accounted for when recovering the ground surface. For ATL08 product regions over Antarctica (regions 7, 8, 9, 10) and Greenland (region 11), the algorithm assumes only ground photons (Section 3.2.2, ATBD for ATL08).

2.3.2.3 Variable Window Determination

For both the canopy/no canopy cases, the surface finding algorithm uses a window of varying size (i.e., span) to compute statistics and smooth and filter the data. The window size is determined using Savitzky-Golay smoothing/median filtering, bound appropriately to prevent over-filtering. To apply this method, the algorithm uses an empirically determined shape function that sets the window size based on the number of photons in the L-km length segment. Note that the window size varies for each L-km length segment but remains constant within a segment (Section 3.2.3, ATBD for ATL08).

2.3.2.4 Compute Descriptive Statistics

A moving window is used to compute descriptive statistics on the de-trended input data to help characterize it and initialize certain parameters used in the surface finding algorithm. The moving window is the same width as the smoothing function described in the preceding section and slides one quarter of its size with each step to allow a large overlap between windows and to ensure that the approximate ground location is returned. Mean height, minimum and maximum heights, and standard deviation of the heights are computed for each step.

The statistics used to estimate the ground height depend on the amount of vegetation within each window. The standard deviation of photon heights is used to classify the vertical spread of the photons within a window and assign it to one of four classes—open, canopy level 1, canopy level 2, or canopy level 3—which range from areas with little or no signal photon spread to areas with a high spread in photon heights (Section 3.2.4, ATBD for ATL08).

2.3.2.5 Ground-Finding Filter

The ground-finding algorithm uses an iterative median filtering approach to retain/eliminate photons when canopy is present. The approach assumes that when canopy exists a smoothed line will lie somewhere between the canopy top and the ground. Once this line is established, the algorithm iteratively labels points above the line as canopy. This process is repeated five times to eliminate points that fall above the estimated surface as well as noise points that fall below the ground (Section 3.2.5, ATBD for ATL08).

2.3.3 Top of Canopy Finding Filter

The same approach used to find the ground is applied to locate the top of canopy. The de-trended data are effectively 'flipped' by multiplying the photon heights by -1 and adding the mean of all the heights back in. The same procedure described in the preceding section is then applied to locate points at the top of the canopy (Section 3.3, ATBD for ATL08).

2.3.4 Photon Classification

Once a composite ground surface is determined, photons are labeled as ground photons if they fall within the point spread function of the surface—approximately 35 cm rms. Signal photons that are not labeled as ground and are below the ground surface (buffered with the point spread function) are labeled as noise but retain the signal label. The top of canopy photons are used to generate an upper canopy surface by applying a shape-preserving surface fitting method. All signal photons that are not labeled ground, lie above the ground surface (buffered with the point spread function), and lie below the upper canopy surface are labeled as canopy photons. Signal photons that lie above the top of canopy surface are labeled as noise but retain their signal label. Signal photon classifications are stored in `gt[x]/signal_photons/classed_pc_flag` and use the following values: noise (0), ground (1), canopy (2), and top of canopy (3) (Section 3.4, ATBD for ATL08).

2.3.5 Refining the Photon Classifications

During the first surface finding iteration, the algorithm may mislabel some photons (most likely classifying noise as canopy). After the first iteration, the algorithm then rejects photons as mislabeled based on set of criteria designed to identify statistically unlikely and unphysical canopy classifications.

In addition, photons labeled as ground are evaluated and reassigned as needed based on the how the ground surface was determined and whether canopy photons have been detected. If no canopy photons are present for an L-km length segment, then the final ground surface is interpolated from the identified ground photons and the segment receives a final round of median filtering and smoothing. If canopy photons are present, then the final ground surface is interpolated based on

the amount of canopy at that location along the segment and constructed iteratively as a composite of various intermediate surfaces. The ground and the canopy refinement criteria are detailed in "Section 3.5 | Refining the Photon Labels" of the ATBD for ATL08.

2.3.6 Canopy Height Determination

Once the final ground surface is determined, canopy heights for individual photons are computed by removing the ground surface height for that photon's latitude/longitude. These relative canopy photon height values are then used to compute the canopy statistics on the ATL08 data product. Vegetation parameters are derived at the fixed segment length of 100 m to ensure that canopy (and terrain) metrics are consistent between segments (Sections 3.6 and 3.7, ATBD for ATL08).

2.4 Quality, Errors, and Limitations

A variety of factors contribute to the accuracy of ATLAS elevation measurements and ATLAS-derived data products. These factors include the ranging precision of the instrument, orbital and geolocation uncertainties, forward scattering in the atmosphere, and uncertainty in the tropospheric path delay. ATLAS/ICESat-2 was designed to have a radial orbital uncertainty of less than 4 cm and a tropospheric path delay uncertainty of approximately 3 cm. Based on prelaunch testing, the ranging precision for flat surfaces is expected to have a standard deviation of approximately 25 cm. Note, however, that these error estimates will evolve as more ATLAS data are acquired and analyzed.

Uncertainty in computed terrain height estimates depends on the uncertainties in the ATL03 data passed to the algorithm combined with any local uncertainties within each 100 m segment, beginning with the number of photons classified as terrain photons. Potential error sources in ATL08 height retrievals are detailed in Sections 1.5–1.8 of the ATL08 ATBD. Topics include vertical sampling error, background noise, misidentified photons, complex topography, dense vegetation, and dense and sparse canopies.

2.4.1 Quick Look Data Quality

The ATL08 quick look products (ATL08QL) are based on the same algorithms that generate the ATL08 final data products. There are two primary differences between final and quick look products: (a) the geolocation uncertainty of the segment and (b) the uncertainty in the reported segment heights.

Analysis to date shows that between 1% and 2% of granules have substantially larger errors than reported below. The ICESat-2 Project Science Office is working to identify and withhold these from further distribution.

2.4.1.1 Geolocation Uncertainty

The final data (ATL08) are based on the best possible solutions for the position of the observatory in space through time. These data use the final orbits of the GPS constellation tracked by the GPS receiver aboard ICESat-2. These products have a geolocation uncertainty of < 5 m. That is, the latitude and longitude of the segments in the ATL08 product are accurately located with less than a 5 m uncertainty.

The ATL08QL data use less precise orbits of the GPS constellation tracked by the GPS receiver aboard ICESat-2. These quick look data have a geolocation uncertainty of ~100 m. That is, the latitude and longitude of the segments in the ATL08QL data are accurately located with approximately 100 m uncertainty.

2.4.1.2 Height Uncertainty

As a result of the larger uncertainty on the position of the ICESat-2 observatory in space, there is a corresponding impact on the ATL08QL segment heights. For ATL08, Magruder et al. (2021) showed standard errors of heights are < 20 cm in comparison with airborne lidar data. For ATL08QL data, the reported segment heights are lower than the segment heights on the final data products by 2.7 m and have a standard deviation of ~7 m. To get the most accurate heights, users can add 2.7 m to the segment heights reported on ATL08QL data; the resulting heights will have a mean bias (measured over a month) of approximately zero and a standard deviation of approximately 7 meters.

The height biases and variation of the quick look products in comparison to the final data products appear to occur over long length scales and thus have only a small impact on the determination of relative height measurements such as tree canopy height.

3 VERSION HISTORY

Changes for Version 6 are as follows:

- Added a quality check to reject segments for which the canopy photons fall more than 150 m below the reference DEM.
- Calculated the background noise rate and number of noise photons within a canopy segment and adjusted the canopy radiometric rate accordingly.
- For segments with a solar elevation angle > 20°, if the background noise rate is < 0.98 of the canopy rate, then reassign the canopy photons as noise photons.
- Incorporated the YAPC photon weights from the ATL03 data product into the ground-finding approach.

- Reduced the number of labeled photons required to report the canopy or terrain heights within each segment for the strong and weak beams, resulting in more ATL08 reported values.

4 DOCUMENT INFORMATION

4.1 Publication Date

January 2023

4.2 Date Last Updated

October 2024