



# ATLAS/ICESat-2 L3A Sea Ice Freeboard, Version 7

---

## USER GUIDE

### How to Cite These Data

As a condition of using these data, you must include a citation:

Kwok, R., Petty, A., Cunningham, G., Markus, T., Hancock III, D. W., Ivanoff, A., Wimert, J., Bagnardi, M., Kurtz, N. & the ICESat-2 Science Team (2025). *ATLAS/ICESat-2 L3A Sea Ice Freeboard* (ATL10, Version 7). [Data set]. Boulder, Colorado USA. NSIDC: National Snow and Ice Data Center. <https://doi.org/10.5067/ATLAS/ATL10.007>. [Date Accessed].

FOR QUESTIONS ABOUT THESE DATA, CONTACT [NSIDC@NSIDC.ORG](mailto:NSIDC@NSIDC.ORG)

FOR CURRENT INFORMATION, VISIT <https://nsidc.org/data/ATL10>



National Snow and Ice Data Center

# TABLE OF CONTENTS

1	DATA DESCRIPTION .....	2
1.1	Summary .....	2
1.2	File Information.....	2
1.2.1	Format.....	2
1.2.2	File Contents.....	2
1.2.3	Naming Convention .....	4
1.2.4	Browse Files .....	5
1.3	Spatial Information.....	5
1.3.1	Coverage .....	5
1.3.2	Resolution.....	5
1.3.3	Geolocation.....	6
1.4	Temporal Information .....	6
1.4.1	Coverage .....	6
1.4.2	Resolution.....	6
2	DATA ACQUISITION AND PROCESSING.....	6
2.1	Background .....	6
2.2	Acquisition .....	7
2.3	Processing.....	7
2.3.1	Freeboard Estimation.....	7
2.4	Quality, Errors, and Limitations .....	7
3	VERSION HISTORY .....	8
4	REFERENCES .....	11
5	DOCUMENT INFORMATION.....	11
5.1	Publication Date .....	11
5.2	Date Last Updated.....	11
	APPENDIX A – ICESAT-2/ATLAS DESCRIPTION .....	12

# 1 DATA DESCRIPTION

The ATL10 data product is described in detail in the ICESat-2 Project Algorithm Theoretical Basis Document (ATBD) for Sea Ice Products (ATBD for ATL07/10/20/21 | Version 7, <https://doi.org/10.5067/KPMXUOH7TNIY>).

## 1.1 Summary

---

ATL10 contains along-track sea ice freeboard calculated for 10 km swath segments. The data were acquired by the Advanced Topographic Laser Altimeter System (ATLAS) instrument on board the ICESat-2 observatory.

## 1.2 File Information

---

### 1.2.1 Format

Data are provided as HDF5-formatted files.

The ATL10 product consists of up to 32 files (granules) per day: 16 for the Northern Hemisphere and 16 for the Southern Hemisphere. Each granule contains sea ice freeboard from data acquired over half an orbit. Six ground tracks within each granule span the width of the orbital swath with an across-track distance of 6 km.

### 1.2.2 File Contents

A complete list of all ATL10 parameters is available in the [ATL10 Data Dictionary](#).

Within data files, similar variables such as science data, instrument parameters, and metadata are grouped together according to the HDF model. ATL10 data files contain the top-level groups shown in the following figure.

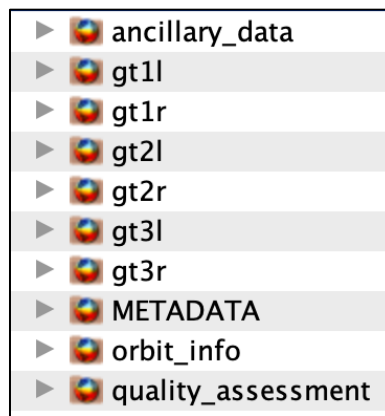


Figure 1. ATL10 top-level data groups.

The following sections summarize the structure and primary variables of interest in ATL10 data files. Additional details are available in "Section 5.2 | Output of Freeboard Estimation Algorithm" and Appendix A of the ATBD for ATL07/10/20/21.

### 1.2.2.1 ancillary\_data

Information ancillary to the data product such as product and instrument characteristics and processing constants.

### 1.2.2.2 gt1l–gt3r

Six ground track groups (gt1l–gt3r), each with the following subgroups:

- `freeboard_segment`: freeboard estimate and associated parameters, including freeboard height for the beam (`beam_fb_height`), acquisition time, latitude and longitude, distance from the equator to the segment center (`seg_dist_x`), and quality indicators for the freeboard estimate.
- `leads`: parameters relating to the determination of open water leads and the reference surface heights.
- `reference_surface_section`: reference sea surface and mean freeboard parameters by beam.

### 1.2.2.3 METADATA

ISO19115 structured summary metadata for the granule, including content that describes the required geospatial information. The version(s) of the input files are included in the file name attribute under the Lineage group.

### 1.2.2.4 orbit\_info

Orbit parameters that are constant for a granule, such as the Reference Ground Track (RGT) number, cycle, and spacecraft orientation (`sc_orient`).

### 1.2.2.5 quality\_assessment

Quality assessment data for the granule as a whole, including a pass/fail flag and a failure reason indicator.

## 1.2.3 Naming Convention

Data files utilize the following naming convention:

ATL10-[HH]\_[yyyymmdd][hhmmss]\_[ttttccss]\_[vvv\_rr].h5

Examples:

ATL10-01\_20230606040409\_11731901\_007\_02.h5

ATL10-02\_20230606040409\_11731901\_007\_02.h5

The following table describes the file naming convention variables:

Table 1. File Naming Convention Variables and Descriptions

Variable	Description
ATL10	ATLAS/ICESat-2 L3A Sea Ice Freeboard product
HH	Hemisphere code. Northern Hemisphere = 01, Southern Hemisphere = 02
yyyymmdd	Year, month, and day of data acquisition for the given Reference Ground Track (RGT)
hhmmss	ICESat-2 data acquisition start time, hour, minute, and second (UTC) for the given RGT (not the start of ATL10 data production)
tttt	Four-digit RGT number. The ICESat-2 mission has 1,387 RGTs, numbered from 0001 to 1387.
cc	Cycle number. Each of the 1,387 RGTs is targeted in the polar regions once every 91 days. The cycle number tracks the number of 91-day periods that have elapsed since ICESat-2 entered the science orbit.
ss	Region number. This number corresponds to the first of the ICESat-2 along-track regions considered for input into ATL10 processing. This region number will always be "01" except when a granule is split along a spacecraft orientation change, in which case, the region number is the last region before the switch and the first region after the switch, in consecutive granules.
vvv_rr	Version and revision number*

\*Occasionally, NSIDC receives reprocessed granules from our data provider. These granules have the same file name as the original (i.e., date, time, ground track, cycle, and region number), but the revision number has been incremented. Although NSIDC deletes the superseded granule, the process can take several days. As such, if you encounter multiple granules with the same file name, please use the granule with the highest revision number.

## 1.2.4 Browse Files

Browse files are provided as JPGs that contain images designed to quickly assess the location and quality of each granule's data. The following browse images are available for each beam:

- `beam_lead_n`: Number of leads used for the beam reference surface section
- `beam_fb_ht_hist`: Histogram of mean freeboard heights
- `beam_fb_height`: Freeboard height relative to `beam_refsurf_height`
- `groundtrack`: Reference surface number of leads

Browse files utilize the same naming convention as their corresponding data file but with "\_BRW" and descriptive keywords appended. An example browse image is shown below.

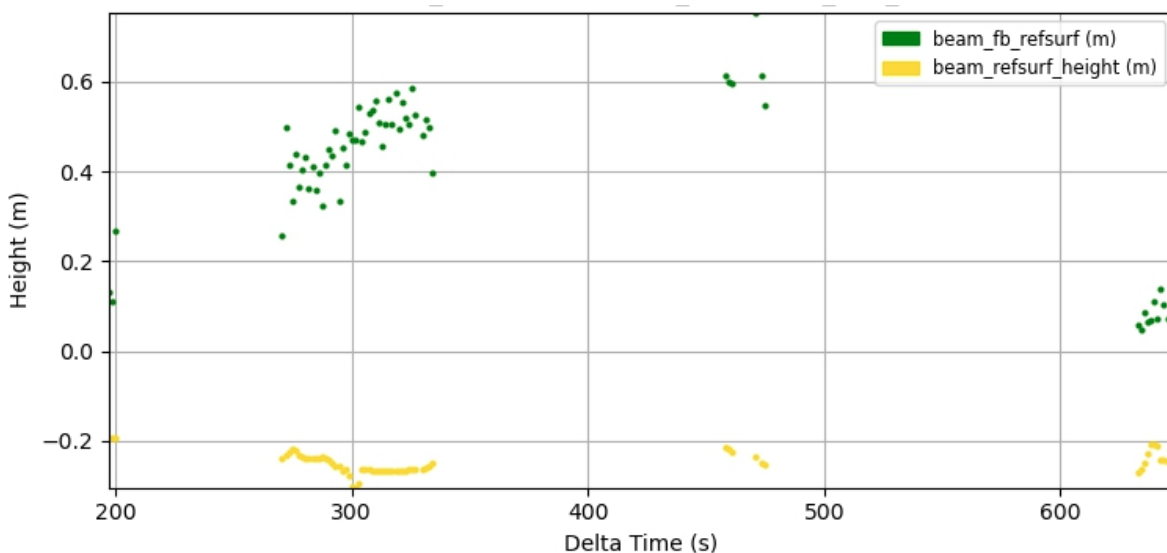


Figure 2. Example browse image of freeboard height (`beam_fb_height`).

## 1.3 Spatial Information

### 1.3.1 Coverage

Spatial coverage spans the ice-covered oceans of the Northern and Southern Hemispheres where the sea ice concentration (SIC) is greater than 50% and at least 25 km from the coast.

SIC is determined by AMSR2 by default ([AU\\_SI12](#)). If AMSR2 is unavailable, then SSM/I ([G02202](#)) is used. If [G02202](#) data are unavailable, then near-real-time SSM/I data ([G10016](#)) are used.

### 1.3.2 Resolution

Freeboard is estimated from ATL07 sea ice height segments that vary in length depending on the distance over which approximately 150 signal photons are accumulated and the availability of a

reference sea surface. The along-track length of these input height segments is stored in `gt[x]/freeboard_segment/heights/height_segment_length_seg`.

### 1.3.3 Geolocation

Points are presented in geodetic latitude, longitude, and ellipsoidal height.

World Geodetic System 1984 (EPSG: 4326)

ITRF2020 (EPSG: 9988)

## 1.4 Temporal Information

---

### 1.4.1 Coverage

Temporal coverage is 14 October 2018 through the most current processing.

Satellite maneuvers, data downlink issues, and other events can introduce data gaps into the ICESat-2 products. Users can download and consult a regularly updated list of [data gaps](#) (.xlsx) on the data set landing page.

Note: Temporal updates to the product are made available to users a few times per year; these new files are not reflected in the Version History section of the user guide.

### 1.4.2 Resolution

ICESat-2 flies along each of its 1,387 RGTs once every 91 days (i.e., the orbit has a 91-day repeat cycle). During many repeat cycles, the beam pattern is shifted from the previous cycle's pointing pattern a variable amount in the cross-track direction during parts of each orbit to increase the density of spatial coverage.

## 2 DATA ACQUISITION AND PROCESSING

### 2.1 Background

---

ICESat-2 provides multiple profiles of sea ice and sea surface heights for improved freeboard and thickness retrievals. Total freeboard is defined as the height of the air–snow interface above the local sea surface. For the Arctic Ocean, the total freeboard is typically assumed to consist of a snow layer superimposed on the freeboard of floating sea ice, i.e., a two-layered system. For Antarctic sea ice, wintertime layering and snow-ice formation (i.e., “flooded ice” from freezing of water-soaked snow) complicate freeboard characterization.

## 2.2 Acquisition

---

ATL10 is derived from ATLAS/ICESat-2 L3A Sea Ice Height (ATL07).

## 2.3 Processing

---

A freeboard estimate is provided for all 'good quality' height segments (not filtered by surface type). Only nominal height segments are included in ATL10. The algorithm first finds the leads, which consist of collections of height segments that are designated as sea surface height segments in ATL07. Then, the leads are used to estimate the height of the reference surface for computing the local freeboard over a 10 km region. Reference surface heights are interpolated (if neighboring reference surfaces are available) to the freeboard height location before the freeboard height computation.

### 2.3.1 Freeboard Estimation

The sea surface reference (for calculating freeboard) is first estimated for each  $L$ -km segment for each beam. Freeboard height is computed for each ATL07 sea ice height segment by subtracting the beam reference surface determined by using only the leads along the beam (i.e., each beam has its own reference surface).

ATL10 maintains the ATL07 segment heights used for the freeboard calculations. For more information, see "Section 5 | ALGORITHM DESCRIPTION: ATL10" of the ATBD.

## 2.4 Quality, Errors, and Limitations

---

A constraint imposed by the inherent capability of the instrument is the impact of clouds on the visibility of sea ice cover. In particular, a reduction in coverage is significant during the summer after the spring-to-summer seasonal transition. Further, the first photon bias is an inherent problem with the photon-counting detectors selected for ATLAS. Even though the biases are at centimeter to sub-centimeter levels for most sea ice surfaces, the effect is large for intense pulses and for pulses from flat surfaces where the return energy is concentrated over a short duration.

Errors in the determination of sea ice freeboard are described in Magruder et al. (2025). The error is a function of the instrument precision, the number of sea ice leads used in the sea ice reference surface, the surface roughness, and the number of signal photons used in the surface height retrieval.

Limitations are imposed by height retrievals and surface classification. Multiple scattering within the ice or snow volume is not quantified and may impact height retrievals. For sea ice, these effects

are mitigated in the surface-finding process via windowing of the photon height distributions to avoid potential tails in the distributions. Because snow properties may be unknown at the time of ATLAS acquisitions, a height correction due to subsurface scattering must be determined independently using external data. The design of the surface type retrieval procedure focuses on sea surface signatures, and there are uncertainties associated with the labeling of the other ice types.

There are also assumptions related to height retrievals: (1) sampled photon heights are random realizations from a Gaussian or lognormal distribution and (2) the first photon bias correction assumes that the photon statistics at a given height remain stationary over time. For more details, see "Section 10 | Constraints, Limitations, and Assumptions" in the ATBD.

The `/gt[x]/freeboard_segment/` subgroup contains key segment quality indicators, such as:

- `beam_fb_confidence`: confidence level in the freeboard estimate
- `beam_fb_quality_flag`: flag describing the quality of the results of the along-track fit
- `/heights/height_segment_confidence`: confidence level in the surface height estimate based on analysis of the error surface

### 3 VERSION HISTORY

Table 2. Version History Summary

Version	Date	Description of Changes
6.1 (retire)	7 Apr 2026	Removed data access for v5.0. Data coverage was 14 Oct 2018 to 2 Mar 2025.
7.0	7 Oct 2025	<ul style="list-style-type: none"> <li>• Introduced interpolation of reference surface heights when computing freeboard heights. In previous releases, a static value of the 10 km reference surface was used to compute freeboard heights. In v7, reference surface heights are interpolated (if neighboring reference surfaces are available) to the freeboard height location before freeboard height computation.</li> <li>• Introduced option to include heights computed using a lognormal distribution when available.</li> <li>• Fix <code>oc_depth</code> parameter. Previously, <code>oc_depth</code> only had values of 0.0.</li> </ul>
6.1	1 May 2024	Data from 13 Nov 2022 to 26 Oct 2023 were reprocessed using ITRF2014 (replacing ITRF2020) for consistency across the entire data set.
5.0 (retire)	12 Feb 2024	Removed data access for v5.0. Data coverage was 14 Oct 2018 to 12 Oct 2022.
6.0	3 Aug 2023	<ul style="list-style-type: none"> <li>• Added new uncorrected sea ice segment height parameter, which is directly computed using ATL03 photon heights. This provides additional coverage for areas where corrected sea ice segment heights cannot be processed.</li> <li>• Added AMSR2 sea ice concentration (SIC) data as follows:               <ol style="list-style-type: none"> <li>1. Use AMSR2 by default (AU_SI12)</li> <li>2. Where AMSR2 is unavailable, use SSM/I (G02202)</li> <li>3. Where G02202 data are unavailable, use near-real-time SSM/I data (G10016)</li> </ol> </li> </ul>

		<ul style="list-style-type: none"> <li>• Implemented land filtering. The introduction of uncorrected caused many returns over land, so <code>distance_to_land</code> and bathymetry ancillary files were introduced. The bathymetry file and <code>distance_to_land</code> filter remove and lower the mean sea ice height.</li> <li>• Added ANC10 ancillary file to read in sea level pressure, which was previously input from ATL09, to provide mean sea level pressure over the oceans for the dynamic inverted barometer (IB) correction.</li> <li>• Added Yet Another Photon Classifier (YAPC) parameters by aggregating YAPC metrics from ATL03 to ATL07 sea ice segment heights data.</li> <li>• Introduced interpolation and extrapolation routines for ocean tides and MSS. The ocean tide reported on ATL03 (GOT4.8 model) has spatial gaps and the MSS grid lacks coverage along coasts and in bays. If the missing parameters are interpolated, then the interpolated geophysical corrections are applied, and corrected heights are produced. Extrapolated parameters are not used to compute a corrected height, and only uncorrected heights are available.</li> <li>• Updated the <code>PODPPD_f1ag</code> filter so that a processing option is available for every flag value.</li> <li>• Apply dynamic IB for processing and read/interpolate sea level pressure directly from ANC10. The updated dynamic IB improves model accuracy and is comparable to the IB corrections commonly provided by other altimetry missions.</li> <li>• The metadata has been updated so that lineage information for ANC10 and ANC48 is written to the ATL07 data product.</li> <li>• Updated the MSS variables description, added mentions of the source of the MSS, and clarified the use of the tide free system.</li> </ul>
5.1	25 May 2023	From 14 Oct 2018 to 12 Oct 2022, SIC data switched from AMSR2 to SSM/I (G10016) to address an issue that occurs based on the presence or absence of ANC49 inputs during processing.
4.0 (retire)	13 Jun 2022	Removed data access for v4.0. Data coverage was 14 Oct 2018 to 15 Jul 2021.
3.0 (retire)	25 Jan 2022	Removed data access for v3.0. Data coverage was 14 Oct 2018 to 11 Nov 2020.
5.0	29 Nov 2021	<ul style="list-style-type: none"> <li>• The ATL07 QA check (<code>atl07_qa_mod</code>) for insufficient output failure has been updated to only check for valid sea ice segments. Previously, total number of sea ice segments written (valid and invalid) were counted.</li> <li>• The description of <code>height_segment_confidence</code> was updated so that it agrees with the coded procedure.</li> <li>• A <code>max_incidence_angle</code> filter was implemented and added as a controllable override. If the beam incidence angle exceeds <code>max_incidence_angle</code>, the surface type will be set to -1.</li> <li>• A contrast filter has been implemented, but turned off by default. Two new controllable parameters have been added.</li> <li>• The <code>podppd</code> flag has been added to the ATL07 product and is used to filter heights and segment surface type.</li> <li>• A new parameter <code>height_segment_n_pulse_seg_used</code> has been added to the ATL07 product. This parameter excludes the number of specular returns filtered out of processing, unlike <code>height_segment_n_pulse_seg</code>.</li> <li>• The description of <code>photon_rate</code> has been updated so that it is clear how the parameter is computed.</li> <li>• Modified the integration test scripts to generate browse products and check for the presence of <code>default1</code> and <code>default2</code> plots.</li> <li>• Updated the ANC31 sea ice concentration interface to read either v1 or v2 of the sea ice concentration files.</li> <li>• New parameters of mean ocean sea level pressure and dynamic inverted barometer effect are calculated in ATL07. These are not currently applied to the heights but could be in future releases. The new parameters are:</li> </ul>

		<p>/ancillary_data/sea_ice /mean_ocean_slp: Mean ocean sea level pressure computed in ATL07 and</p> <p>/gtx/sea_ice_segments/geophysical/height_segment_dynib: Dynamic inverted barometer.</p>
2.0 (retire)	21 May 2021	Removed data access for v2.0. Data coverage was 14 Oct 2018 to 15 Nov 2019.
4.0	13 Apr 2021	<ul style="list-style-type: none"> <li>• Confirmed proper marking of invalid parameters from ATL03 to ATL09, including ocean tide. If an invalid is found, the average for the segment is set to invalid.</li> <li>• Meteorological data from ATL09 for the weak beam has been properly aligned with the strong beam by using distance instead of time.</li> <li>• Removed geolocation segments with poor orbit or poor pointing quality from being used by using the podppd_flag from ATL03.</li> <li>• Dynamically converted MSS values to the tide-free system.</li> <li>• Dynamically adjusted sea ice coarse track height filters for the tide-free system.</li> <li>• Read the free2mean parameters from ATL03 and averaged them to a sea ice segment rate in to ATL07.</li> <li>• Fixed error in calculation of sea ice segment length to correctly measure length and remove negative results.</li> <li>• Fixed error in the computation of first photon bias.</li> </ul>
1.0 (retire)	9 Jul 2020	Removed data access for v1.0. Data coverage was 14 Oct 2018 to 14 Jan 2019.
3.0	11 Jun 2020	<ul style="list-style-type: none"> <li>• Added additional sea ice browse images to allow for better qualitative assessment of the product.</li> <li>• Fixed a bug related to temporal/geographic bounds that placed ATL07 granules in the wrong hemisphere on Earthdata Search.</li> <li>• Sea ice processing now limited to medium and high confidence photons when determining if a photon return is specular. This addresses overlap in the land ice and sea ice masks and issues with over-counting photons prior to calculating specular returns.</li> <li>• The algorithm was updated to account for the additional photons in the larger land ice telemetry window in regions where the land and sea ice masks overlap. This improves coverage around coastal Antarctica and the Arctic coast—in particular around Arctic shelves and Canadian Arctic Archipelago passages.</li> <li>• Removed TEP photons from consideration for sea ice processing.</li> </ul>
2.0	24 Oct 2019	<ul style="list-style-type: none"> <li>• The parameters "tep_used_gt1_strong", "tep_used_gt1_weak", "tep_used_gt3_strong", and "tep_used_gt3_weak" are now filled with a value which shows which TEP was used (beam_3 or beam_5) to create the waveform table for the corresponding beam.</li> <li>• The code now uses sea level pressure from ATL09 (instead of surface pressure), smoothed by averaging over 8 seconds.</li> <li>• The default value for the number of photons collected for a fine track segment has been updated to 150.</li> <li>• The apparent surface reflectance (ASR) and background computations have been updated to use the proper return sensitivity value.</li> <li>• The equilibrium tide is now read from ATL03. Values are averaged over a sea ice segment and written to the geophysical group.</li> <li>• The code has been updated to use the equilibrium tide when there is a valid ocean tide correction to the photon heights.</li> </ul>
1.0	28 May 2019	Initial release

## 4 REFERENCES

Magruder, L. A., Brunt, K., Neumann, T., Klotz, B., & Alonzo, M. (2020). Passive ground-based optical techniques for monitoring the on-orbit ICESat-2 altimeter geolocation and footprint diameter. *ESS Open Archive*. <https://doi.org/10.1002/essoar.10504571.1>

Magruder, L. A., Neumann, T., Kurtz, N., Sutterley, T. C., Hancock, D., Vornberger, P., Robbins, J., & Smith, B. (2025). Assessment of the Ice, Cloud, and Land Elevation Satellite-2 Performance Against Prime Mission Science Requirements. *Earth and Space Science*, 12(4). <https://doi.org/10.1029/2025EA004221>

## 5 DOCUMENT INFORMATION

### 5.1 Publication Date

---

October 2025

### 5.2 Date Last Updated

---

April 2026

## APPENDIX A – ICESAT-2/ATLAS DESCRIPTION

The ICESat-2 observatory utilizes a photon-counting lidar (the ATLAS instrument) and ancillary systems (GPS, star tracker cameras, and ground processing) to measure the round-trip time a photon takes to travel from ATLAS to Earth and back again. The time-of-flight, absolute time, spacecraft location and pointing are used to determine the reflected photon's geodetic height, latitude, and longitude.

The ATLAS instrument uses a single laser and a beam splitter to illuminate six different “spots” that each trace out a ~11 m wide track (Magruder et al., 2020) as ICESat-2 orbits Earth (Figure A - 1). Three of the spots are considered “strong” (spots 1, 3, and 5) and the other three “weak” (spots 2, 4, and 6). Three independent Photon Counting Electronics (PCEs) record the photons returned to the telescope, each for a single pair of strong/weak spots. PCE1 records spots 1 and 2; PCE2 records spots 3 and 4; and PCE3 records spots 5 and 6.

Higher-level ATLAS/ICESat-2 data products are organized by ground track (GT), with GT1L and GT1R forming pair one, GT2L and GT2R forming pair two, and GT3L and GT3R forming pair three. Each GT is numbered according to the relative location of the laser spot that generates it, with GT1L on the far left and GT3R on the far right. Left/right beams within each pair are approximately 90 m apart in the across-track direction and 2.5 km in the along-track direction.

The mapping between the strong and weak spots of ATLAS, and their relative positions on the ground, depends on the orientation (yaw) of the ICESat-2 observatory, which is changed approximately twice per year to maximize solar illumination of the solar panels. The forward orientation corresponds to ATLAS traveling along the +x coordinate in the ATLAS instrument reference frame (Figure A - 1, left), with the weak spots leading the strong spots. In the backward orientation, ATLAS travels along the -x coordinate in the instrument reference frame, with the strong spots leading the weak spots (Figure A - 1, right). Atmospheric profiles are generated from strong spots only, and the instrument orientation determines which GT label (“gtx”) corresponds to which profile. The spacecraft orientation is tracked in the [ICESat-2 Major Activities](#) document (.xlsx).

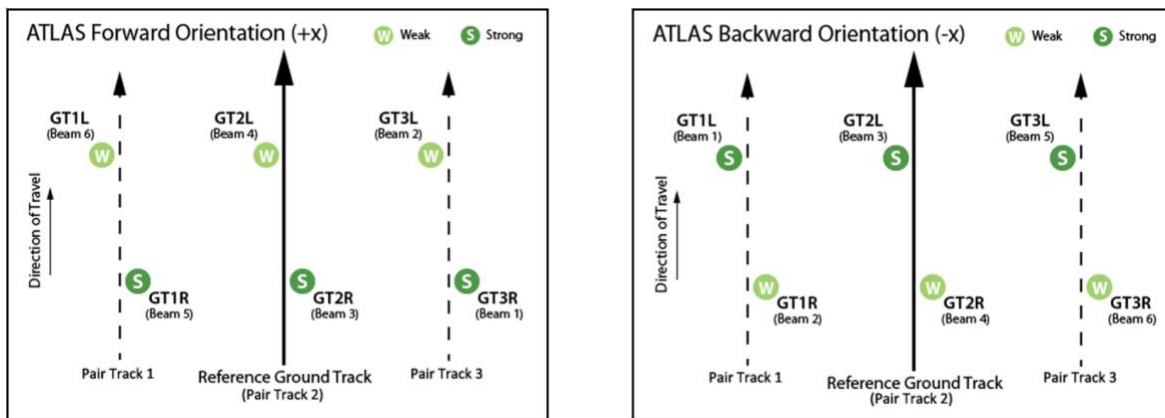


Figure A - 1. Spot and Ground Track (GT) naming convention.

The Reference Ground Track (RGT) is an imaginary track on Earth through the six-spot pattern that is used to point the observatory. 1,387 RGTs are sampled over the course of 91 days, allowing seasonal height changes to be detected. Onboard software aims the laser beams so that the RGT is between GT2L and GT2R (i.e., coincident with Pair Track 2). Nominal RGT pointing occurs over the oceans and polar regions and is periodically adjusted over vegetated land areas to broaden global coverage. Cycle numbers track the number of 91-day periods that have elapsed since the ICESat-2 observatory entered the science orbit. RGTs are uniquely identified by appending the two-digit cycle number (cc) to the RGT number.

Over lower latitudes, the satellite points slightly off the RGT during most cycles to measure canopy and ground heights. Off-pointing began on 1 August 2019 with RGT 518 after the ATLAS/ICESat-2 Precision Pointing Determination (PPD) and Precision Orbit Determination (POD) solutions were adequately resolved, and the instrument had pointed directly at the RGT for at least a full 91 days (1,387 orbits).

**NOTE:** ICESat-2 RGTs with dates and times can be downloaded as KML files from NASA's [ICESat-2 | Technical Specs](#) page, below the Orbit and Coverage table. Pointing plans summarized by cycle and off-pointing angle are posted in the [ICESat-2 Major Activities](#) document.

The ATLAS data and data collected from ancillary systems are telemetered to the ground and processed into several data products (Figure A - 2). The ATL01 algorithm reformats and unpacks the Level 0 data and converts it into engineering units. ATL02 processing converts ATL01 data to science units, applies instrument corrections, and produces photon time-of-flight data. The PPD and POD solutions compute the pointing vector and position of the ICESat-2 observatory as a function of time. ATL02, PPD, and POD are used to produce the global geolocated photon data of ATL03 and the normalized relative backscatter profiles of ATL04, which are the base products for all higher-level data sets.

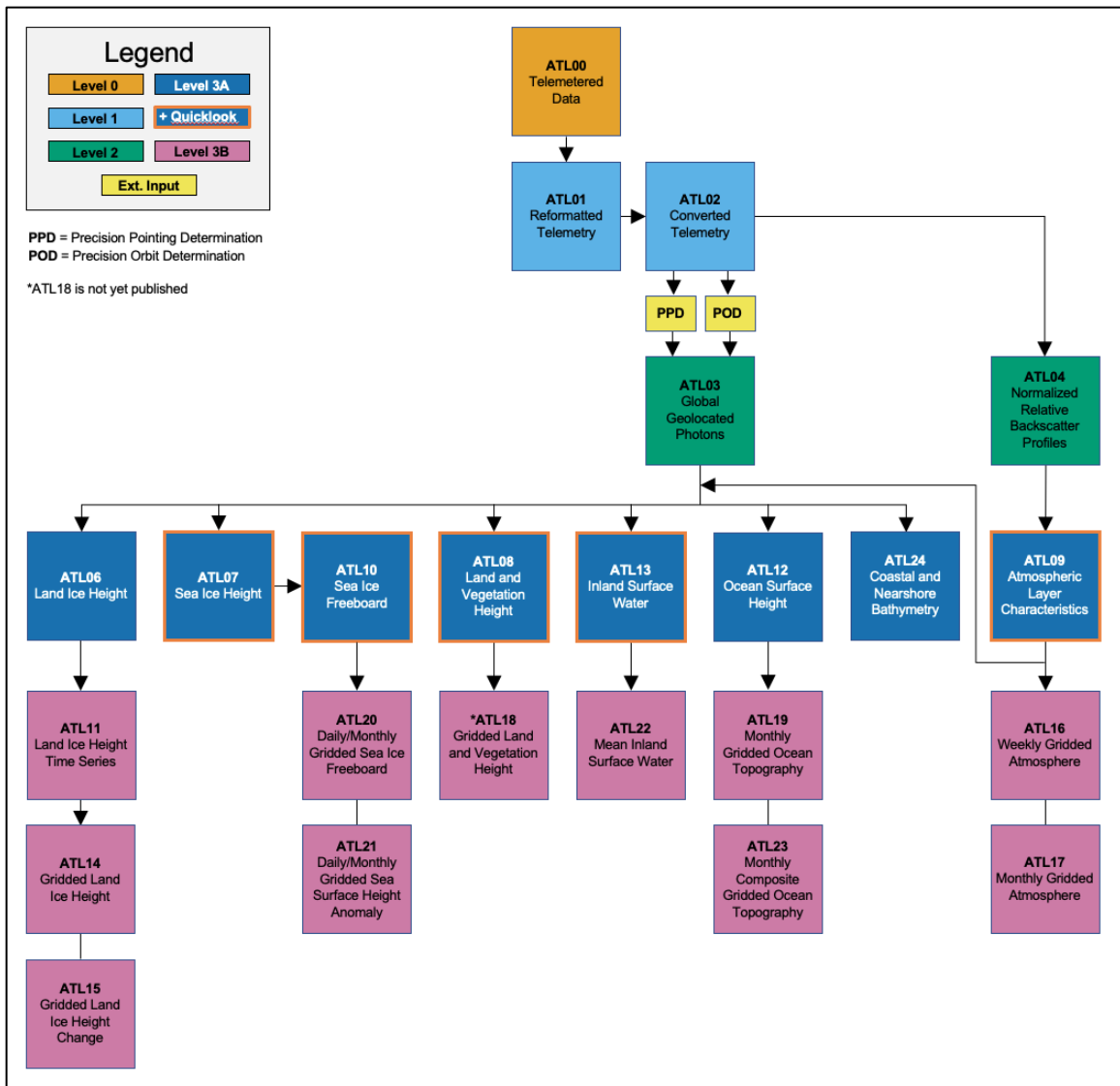


Figure A - 2. Schematic of ICESat-2 data processing and data products.

In satellite altimetry, the reflection point of an emitted signal occurs on an instantaneous and often dynamic planetary surface (Figure A - 3). For ICESat-2, reflective surfaces include oceans, inland water bodies, solid ground, ice, vegetation, and manmade structures. Depending on the product and surface type, geophysical corrections are applied to measurements to account for various time-varying processes (Table A - 1). Upper-level products may undergo additional height corrections, including corrections for pulse shape and instrument characteristics. For more information, refer to the data product's ATBD.

Table A - 1. Geophysical Corrections Applied to ICESat-2 Products

ICESat-2 Products by Surface Type	Geophysical Corrections <sup>1</sup>
Photon-level product (ATL03) (i.e., corrections applicable across all surface types)	Ocean loading Solid Earth tide Solid Earth pole tide Ocean pole tide Total column atmospheric delay
Land Ice, Land, and Inland Water (ATL06, ATL08, and ATL13)	<i>No geophysical corrections beyond ATL03</i>
Sea Ice (ATL07 and ATL10)	ATL03 corrections Referenced to mean sea surface Ocean tide Long period equilibrium ocean tide Dynamic atmosphere correction
Ocean (ATL12)	ATL03 corrections Ocean tide Long period equilibrium ocean tide

<sup>1</sup>For details, see Section 5 of the *ICESat-2 Data Comparison User's Guide for Rel007* available on the ATL03 data set landing page.

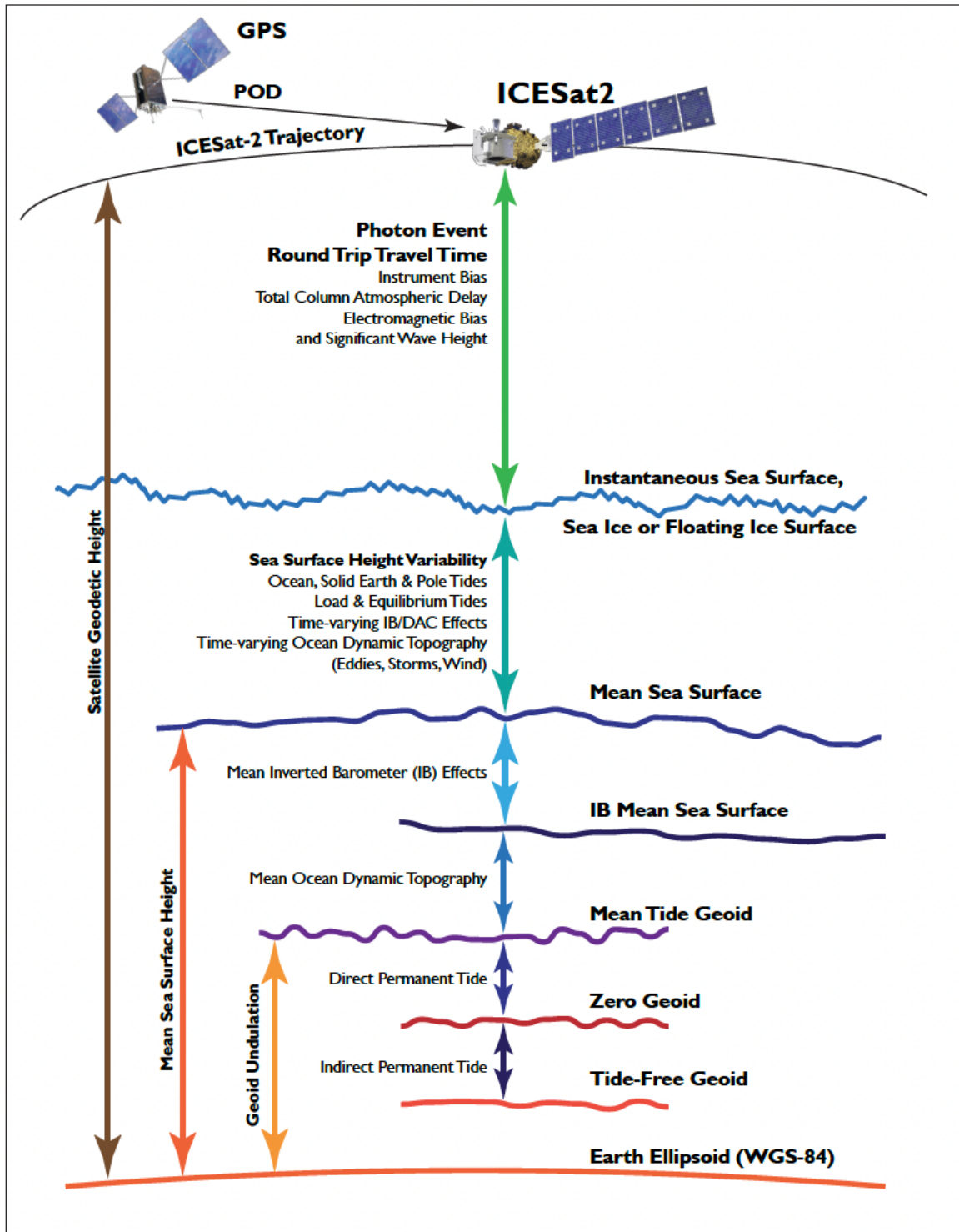


Figure A - 3. Geophysical corrections used in satellite altimetry (Source: *ICESat-2 Data Comparison User's Guide for Rel007*, Available on the ATL03 data set landing page).