
NEWS RELEASE

National Ice Services Advise of Continuing Navigation Hazards

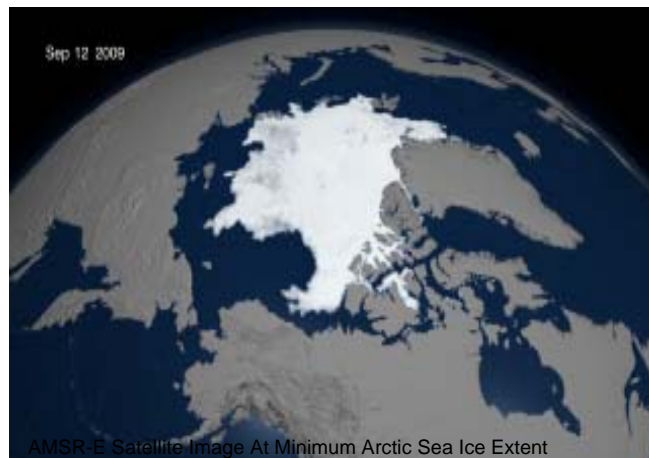
Geneva Switzerland, October 16, 2009 - The International Ice Charting Working Group (IICWG) celebrates its 10th meeting at the World Meteorological Organization in Geneva with a focus on Arctic shipping. The IICWG issued the following statement:

“Sea ice and icebergs present a significant marine hazard that, considering the increase in the number and size of ships venturing into the Arctic and Antarctic, should be considered serious. Careful navigation of capable vessels by well-trained crews using the most up-to-date information is essential to avoid disaster.

“With less compacted sea ice, hazardous floes and icebergs are more mobile and less easily detected by mariners. Sustained monitoring and improved predictions of ice conditions are essential for safe navigation. The national ice services are working together in the International Ice Charting Working Group to ensure that vessels operating in ice encumbered waters have the best information possible.”

Highlights of 2009:

- Over 1,200 icebergs drifted into the trans-Atlantic shipping lanes, making the iceberg season in the North Atlantic the eleventh most severe since the tragic loss of the RMS Titanic in 1912.
- The sea ice pack in the Arctic Ocean shrank to its third-lowest extent since the beginning of quantitative satellite observations about 30 years ago. Although greater than the record lows in 2007 and 2008, the minimum ice extent was still well below normal.
- Although ice conditions in the Northwest Passage were more difficult for shipping than in each of the three previous years, a record number of pleasure craft transited the Passage.
- The citizens of Nuuk, Greenland saw the cruise ship Crown Princess, with over 4,000 people on board, steam into their harbour, the farthest north



AMSR-E Satellite Image At Minimum Arctic Sea Ice Extent
(Courtesy: NASA)

that such a large passenger vessel has ever ventured in normally ice infested waters.

- Marine transportation of natural resources is increasing from Russian Arctic ports to the West.
- Two German heavy-lift ships successfully traversed the Northeast Passage from Korea to Novyi Port in the Russian Federation, in what their company believes is the beginning of more regular use of this Arctic shipping route.

The IICWG was formed in 1999 to promote cooperation between the world's ice services on all matters concerning sea ice and icebergs and brings together the operational ice services of Canada, Denmark (Greenland), Finland, Iceland, Germany, Norway, Russian Federation, Sweden, United States and the International Ice Patrol. These services are charged with monitoring sea ice and icebergs for marine safety.

For more information on the IICWG, see <http://nsidc.org/noaa/iicwg/>.

For more information, please contact:

Mr. John Falkingham
IICWG Secretariat
Ottawa, Canada
Tel: +1 613-355-4552
John.Falkingham@rogers.com

Mr. Keld Qvistgaard
Danish Meteorological Institute
Copenhagen, Denmark
Tel: +45 39 15 73 44
kqh@dmi.dk

Dr. Jürgen Holfort
Federal Maritime and Hydrographic Agency of
Germany
Rostock, Germany
Tel: +49 (0) 381 4563-782
juergen.holfort@bsh.de

CDR Scott Rogerson
USCG International Ice Patrol
New London, CT, USA
Tel: +1 860-271-2631
Scott.D.Rogerson@uscg.mil

Dr. Pablo Clemente-Colón
U.S. National Ice Center
Washington, D.C.
Tel: +1 301-394-3100 x3105
Pablo.Clemente-Colon@natice.noaa.gov

Mr. Helge Tangen
Norwegian Meteorological Institute
Tromsø, Norway
Tel: +47 77 62 13 00
Helge.Tangen@met.no

Dr. Vasily Smolyanitsky
Arctic and Antarctic Research Institute
St. Petersburg, Russian Federation
Tel: +7 (812) 352-2152
vms@aari.ru

